

Collection Mediterranea



So werden Zimmer zu Sehenswürdigkeiten.

Così le camere si trasformano in ambienti affascinanti.

In this way rooms become attractions.

Collection Mediterranea - mit diesen fein gearbeiteten Möbeln können Sie in Ihrem Hotel für ein mediterranes „Raumklima“ sorgen. Denn diese anmutigen, handwerklich hochwertigen Stücke mit feinen Kannelierungen sorgen für eine betont freundliche und lebensfrohe Atmosphäre. Und sie beweisen, dass ein eleganter, nobler Rahmen nicht kalt und unpersönlich sein muss. Wer in diesen Zimmern zu Gast ist, spürt, dass man hier alles tut, um seinen Aufenthalt zu einem unvergesslichen Genuss zu machen.

Collection Mediterranea - con questi pregiati mobili lavorati finemente potrete creare un'atmosfera mediterranea nel vostro albergo. Questi mobili deliziosi, che con le loro scanalature delicate evocano una grande abilità artigianale, trasformano ogni ambiente in una zona simpatica e allegra dando prova del fatto che un luogo signorile ed elegante non deve essere affatto sterile e freddo. L'ospite di queste camere percepisce tutto l'impegno qui profuso per permettergli di trascorrere giorni indimenticabili.

Collection Mediterranea - with this finely made furniture, you can set up a Mediterranean "microclimate" in your hotel. Because these charming pieces with high-quality handicraft and fine fluting create an emphatically friendly and merry atmosphere. And they prove that an elegant, noble setting does not have to be cold and impersonal. Anyone who is a guest in these rooms feels that everything is being done to make his or her stay into an unforgettable pleasure.





- H2109** Kopfteil Doppelbett / Testata letto matrimoniale / Double bed headboard
cm 207x9/120 in 81.5x3.5/47.2
- H5463** Kommöden / Comodino / Night stand
cm 55x40/55 in 21.7x15.7/21.7
- 4100** Konsole / Consolle / Console
cm 100x35/75 in 39.4x13.8/29.5
- H1226** Kofferablage / Portavaligie / Luggage stand
cm 120x40/45 in 47.2x15.7/17.7



1110 Stuhl / Sedia / Chair
cm 48x56/96/48 in 18.9x22/37.8/18.9
H6364 Schreibtisch / Scrivania / Desk
cm 120x60/77 in 47.2x23.6/30.3





Foto: Grand Barrail

Grand Barrail Château Resort & Spa,
St. Emilion, France



- 1444** Sessel / Poltrona / Armchair
cm 78x76/87/41 in 30.7x29.9/34.3/16.1
- 1445** Hocker / Sgabello / Ottoman
cm 70x40/41 in 27.6x15.7/16.1
- 1913** Stuhl / Sedia / Chair
cm 48x56/96/48 in 18.9x22/37.8/18.9
- H3685** Bistrotisch / Tavolino bistrò / Bistro table
cm Ø 70/65 in Ø 27.6/25.6
- H6359** Schreibtisch/Minibar LX / Scrivania
minibar SX / Desk/Minibar unit LX
cm 144x55/77 in 56.7x21.7/30.3

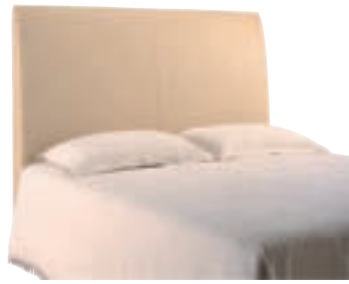


- H1231** Kopfteil Doppelbett gepolstert / Testata letto matrimoniale imbottita /
Double bed headboard, upholstered cm 200x16/140 in 78.7x6.3/55.1
- 5416** Kommode / Comò / Chest of drawers cm 83x40/74 in 32.7x15.7/29.1
- 4020** Konsole / Consolle / Console cm 95x35/74 in 37.4x13.8/29.1



- 3801** Bestelltisch / Tavolino / End Table
cm 65x65/55 in 25.6x25.6/21.7
- H1051** Bettcouch / Divano letto / Sleeper couch
cm 163x89/85/44 (130x190) in 64.2x35/33.5/17.3 (51.2x74.8)
- 3800** Bestelltisch / Tavolino / End Table
cm Ø 55/63 in Ø 21.7/24.8
- H6358** Schreibtisch / Scrivania / Desk
cm 110x60/77 in 43.3x23.6/30.3





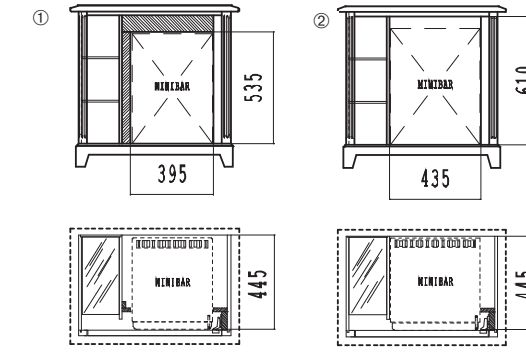
H1230 cm 180x16/140 in 70.9x6.3/55.1
 H1231 cm 200x16/140 in 78.7x6.3/55.1
 Kopfteil Doppelbett gepolstert / Testata letto matrimoniale imbottita /
 Double bed headboard, upholstered



H2109 cm 207x9/120 in 81.5x3.5/47.2
 Kopfteil Doppelbett / Testata letto matrimoniale / Double bed headboard



H5462 cm 80x55/77 in 31.5x21.7/30.3
 Minibar Möbel RX / Mobile minibar Dx / Minibar unit RX



① Innenmaß mit Passleiste / Misura vano con fascia di tamponamento / Measurements with buffer strip
 ② Innenmaß ohne Passleiste / Misura vano senza fascia di tamponamento / Measurements without buffer strip



H5463 cm 55x40/55 in 21.7x15.7/21.7
 Kommödchen / Comodino / Night stand



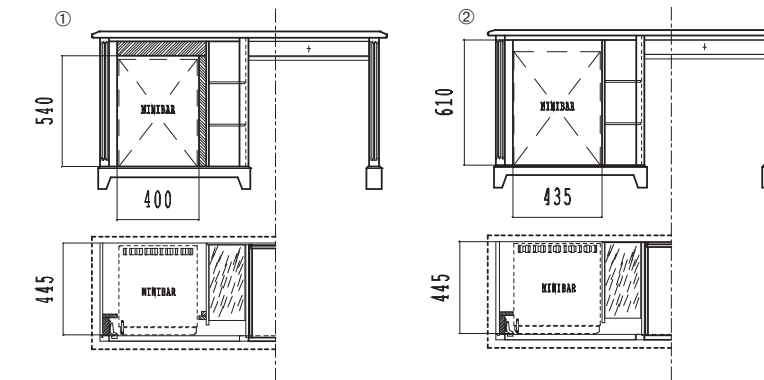
4100 cm 100x35/75 in 39.4x13.8/29.5
 Konsole / Consolle / Console



4800 cm 90x40/80 in 35.4x15.7/31.5
 Konsole / Consolle / Console



H6359 cm 144x55/77 in 56.7x21.7/30.3
 Schreibtisch/Minibar LX / Scrivania minibar SX / Desk/Minibar unit LX



① Innenmaß mit Passleiste / Misura vano con fascia di tamponamento / Measurements with buffer strip
 ② Innenmaß ohne Passleiste / Misura vano senza fascia di tamponamento / Measurements without buffer strip



H6358 cm 110x60/77 in 43.3x23.6/30.3
Schreibtisch / Scrivania / Desk



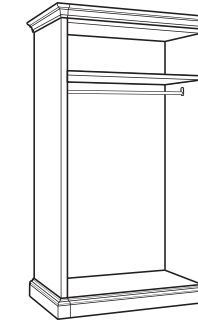
H6364 cm 120x60/77 in 47.2x23.6/30.3
Schreibtisch / Scrivania / Desk



H1073 cm 65x41/50 in 25.6x16.1/19.7
Kofferablage / Portavaligie / Luggage stand



H9800 cm 61x49/68 in 24x19.3/26.8
Kofferablage / Portavaligie / Luggage stand



7421 cm 108(99)x62(54)/209 in 42.5(39)x24.4(21.3)/82.3
Anbauschränk / Armadio componibile / Extendable wardrobe



7422 cm 156(147)x62(54)/209 in 61.4(57.9)x24.4(21.3)/82.3
Anbauschränk / Armadio componibile / Extendable wardrobe



H1226 cm 120x40/45 in 47.2x15.7/17.7
Kofferablage / Portavaligie / Luggage stand



H1274 cm 120x40/60 in 47.2x15.7/23.6
Kofferablage / Portavaligie / Luggage stand



H4176 cm 90x55/67/50 in 35.4x21.7/26.4/19.7
Kofferablage / Portavaligie / Luggage stand



8421 cm 38x46/158 in 15x18.1/62.2
Regalelement / Elemento scaffale interno / Internal shelf element



8420 cm 38x45/45 in 15x17.7/17.7
Schubladenelement / Elemento cassettiera interna / Internal drawer element



8422 cm 95x44/45 in 37.4x17.3/17.7
Schubladenelement / Elemento cassettiera interna / Internal drawer element



9420 cm 95x52/2 in 37.4x20.5/0.8
Einlegeboden / Ripiano / Shelf



H7401 cm 125x61(53)/200 in 49.2x24(20.9)/78.7
Schränk / Armadio / Wardrobe



H9397 cm 56x6/170 in 22x2.4/66.9
Garderobenelement / Pannello appendiabiti /
Coat rack



H9398 cm 56x6/170 in 22x2.4/66.9
Garderobenspiegel / Pannello con specchio /
Coat rack/mirror



3800 cm Ø 55/63 in Ø 21.7/24.8
Beistelltisch / Tavolino / End table



3801 cm 65x65/55 in 25.6x25.6/21.7
Beistelltisch / Tavolino / End table



3802 cm 120x65/55 in 47.2x25.6/21.7
Salontisch / Tavolino da salotto / Sofa table



3112 cm 70x70/50 in 27.6x27.6/19.7
Salontisch / Tavolino da salotto / Coffee table



3125 cm Ø 70/65 in Ø 27.6/25.6
Bistrotisch / Tavolino bistrò / Bistro table



H3685 cm Ø 70/65 in Ø 27.6/25.6
Bistrotisch / Tavolino bistrò / Bistro table



H3468 cm 90x60/55 in 35.4x23.6/21.7
Beistelltisch / Tavolino / Occasional table



H3626 cm Ø 40/60 in Ø 15.7/23.6
Beistelltisch / Tavolino / Occasional table



H1312 cm 67x65/98/44 in 26.4x25.6/38.6/17.3
Sessel / Poltrona / Armchair



1515 cm 69x87/112/44 in 27.2x34.3/44.1/17.3
Bergère / Poltrona Bergère / Bergère armchair



1486 cm 59x62/86/48 in 23.2x24.4/33.9/18.9
Sessel / Poltrona / Armchair



1264 cm 47x60/104/48 in 18.5x23.6/40.9/18.9
Stuhl / Sedia / Chair

Hölzer und Oberflächen

Legni e Finiture

Woods and Finishes

Holz
Massivteile: Linde
Furnierte Teile: Kirsch

Zierbeschläge
Messing, antikisiert und brüniert

Legno
Parti massicce: Tiglio
Parti impialacciate: Ciliegio

Ferramenta ornamentale
Ottone, brunito ed anticato

Wood
Solid sections: Linden
Veneered sections: Cherry

Fittings
Brass, antiqued and burnished



1226 cm 60x60/86/43 in 23.6x23.6/33.9/16.9
Sessel / Poltrona / Armchair



1110 cm 48x56/96/48 in 18.9x22/37.8/18.9
Stuhl / Sedia / Chair



1111 cm 57x56/96/48 in 22.4x22/37.8/18.9
Armlehnstuhl / Sedia con braccioli / Armchair



1444 cm 78x76/87/41 in 30.7x29.9/34.3/16.1
Sessel / Poltrona / Armchair

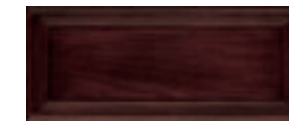


1445 cm 70x40/41 in 27.6x15.7/16.1
Hocker / Sgabello / Ottoman



1225 cm 70x75/75/40 in 27.6x29.5/29.5/15.7
Sessel / Poltrona / Armchair

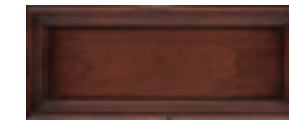
Oberflächen / Finiture / Finishes



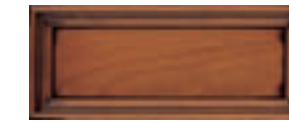
s



z



d



zz



k



o



m



oo



mm



L

- s = Nussbaumfarbig antik dunkel; DD-Lack / Finitura tinta noce anticato scuro, finito con lacca a due componenti / Antique dark walnut-coloured; two-component lacquer
- d = Nussbaumfarbig antik dunkel mit Gebrauchsspuren; DD-Lack / Finitura tinta noce anticato scuro con rovinio, finito con lacca a due componenti / Antique dark walnut-coloured with distressed finish; two-component lacquer
- k = Kirschbaumfarbig; DD-Lack / Finitura tinta ciliegio, finito con lacca a due componenti / Cherry-coloured with two-component lacquer
- m = Französisch kirschbaumfarbig mit Gebrauchsspuren; DD-Lack / Finitura tinta ciliegio francese con rovinio, finito con lacca a due componenti / French cherry-coloured with distressed finish; two-component lacquer
- mm = Französisch kirschbaumfarbig; DD-Lack / Finitura tinta ciliegio francese, finito con lacca a due componenti / French cherry-coloured; two-component lacquer
- z = Kirschbaumfarbig antik mit Gebrauchsspuren; DD-Lack / Finitura tinta ciliegio anticato con rovinio, finito con lacca a due componenti / Antique cherry-coloured with distressed finish; two-component lacquer
- zz = Kirschbaumfarbig antik; DD-Lack / Finitura tinta ciliegio anticato, finito con lacca a due componenti / Antique cherry-coloured; two-component lacquer
- o = Nussbaumfarbig antik mit Gebrauchsspuren; DD-Lack / Finitura tinta noce anticato con rovinio, finito con lacca a due componenti / Antique walnut-coloured with distressed finish; two-component lacquer
- oo = Nussbaumfarbig antik; DD-Lack / Finitura tinta noce anticato, finito con lacca a due componenti / Antique walnut-coloured; two-component lacquer
- L = Elfenbeinfarbig antikisiert; Acryllack / Finitura avorio anticato con lacca acrilica / Ivory-coloured, antiqued with acrylic lacquer

SELVA

SELVA HOSPITALITY - A DIVISION OF SELVA AG/SPA

Selva AG-SpA via Luigi Negrelli Straße 4 39100 Bozen-Bolzano Italy
www.selva.com selva@selva.com

Edition 1:01/08